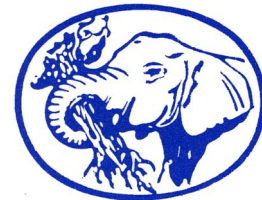


ellettari

Officine Meccaniche



Elephant

Posatubi
Totalmente
oleodinamico

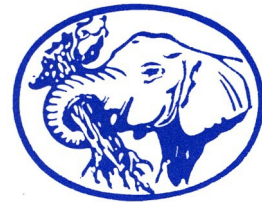
Pipelayer
Totally hydraulic

Machine
Pose-conduites
mouvement totalement
hydraulique

ellettari s.r.l. - Via Roma, 5 – 43044 Madregolo di Collecchio (Parma) Italia
Tel. +39.0521.800743

www.ellettari-group.it e-mail: info@ellettari-group.it

Elephant



Posatubi

T45 T60 T90

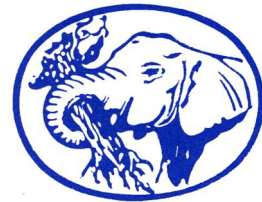
Per la posa di condotte da fino a 60"

Able to lay pipeline until 60"OD

Capable de poser des conduits jusqu'à 60"

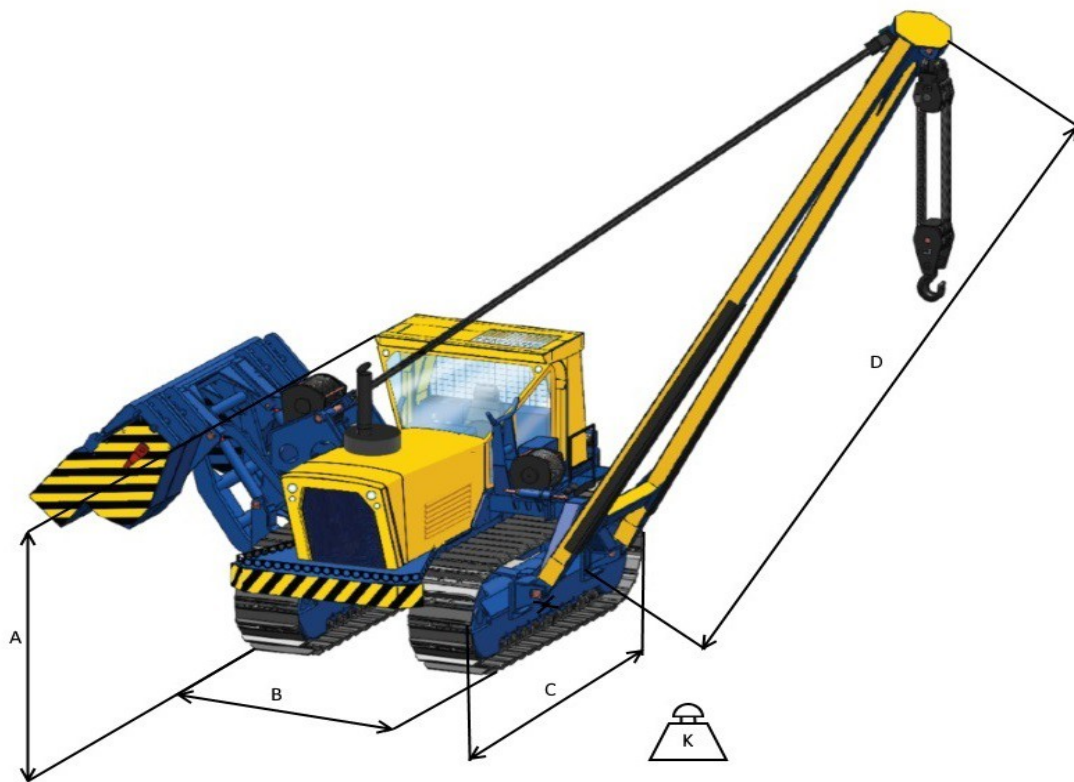


Elephant



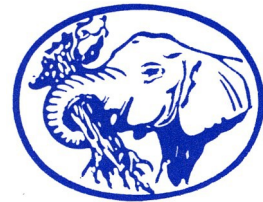
Dimensioni / Sizes / Dimensions

T45 T60 T90



ELEPHANT	T45	T60	T90
A	2,80m	2,90m	3,18m
B	2,60m	2,80m	3,0m
C	4,50m	5,30m	5,85m
D	7m	9m	9m
K	30.750 Kg	40.550 Kg	60.850 Kg
Potenza/ Power Puissance	150 Kw	200 Kw	240 Kw
Sollevamento Lift capacity Capacité de levage	45 ton	60 ton	90 ton

Elephant



Solo 2 ore per smontare
la nostra posatubi
2 hours only to take away
our pipelayer
2 heures seulement pour
enlever notre machine

